

# Northcentral Pennsylvania Conservancy

*Conserving and enhancing the lands and waters of Northcentral PA*



Fall 2024

***Thank you for conserving and enhancing the lands and waters in the region.***

## **Conservation Stories Because of You:**

- **Conserving Pine Creek Frontage and Improving Management Access**
- **Driving the Success of Conservation Easements**
- **Helping Conservation Easement Landowners Develop Forest Management Plans**
- **Stabilizing Blossburg's Island Park Riverbank**

## Conserving Pine Creek Frontage and Improving Management Access

Thanks to the support of NPC members, a triangle-shaped property along Pine Creek, nearly surrounded by State Forest Land, will soon become part of the Tiadaghton State Forest!

Over the summer, your contributions helped purchase this deeded 11.3-acres, which features approximately 1,500 feet of Pine Creek frontage. With nearly all of two sides adjoining Tiadaghton State Forest, your efforts ensure that one mile on the western side of Pine Creek will remain forested. The Bureau of Forestry (BOF) also owns the island just offshore, contributing to the area's natural appeal.

Once transferred to the BOF, this property will be managed as part of the Tiadaghton State Forest. Owning this land will streamline boundary marking for the BOF

and improve access for essential management activities, such as treating non-native plants and pests. Access can often be challenging on state-owned land, making this acquisition even more significant.

Geologically, the area features large flat bedrock along the edge of Pine Creek, providing a perfect spot for paddlers to stretch their legs or enjoy a snack. Anglers will benefit from improved footing and a convenient break area.

Thank you for your continued support in conserving this property and another little piece of the Pine Creek Valley! Your investment in conservation and George Durrwachter's friendships along Pine Creek are what make these projects possible!



*René, NPC Executive Director, and Roy, Board Member, explore this newly conserved property in Lycoming County, which borders Pine Creek (as seen on the cover).*

## Your Support Drives the Success of Conservation Easements

Every year, Sara embarks on her annual site visits to NPC's 53 (and growing!) conservation easements. This growing number is a testament to your ongoing support. Your commitment to conserving the lands and waters of northcentral Pennsylvania puts landowners at ease, knowing NPC is the organization to carry these efforts forward. Year after year, your support provides the resources essential for conservation success. Sara's site visits are just one of the many ways you help make this possible.



### Edwards Homestead Conservation Easement, Clinton County

*The Edwards Homestead conservation easement conserves valuable working farmland and borders other conserved lands, helping create a larger area of sustainable space.*



### MacPhail Conservation Easement, Bradford County

*Late summer on NPC's conservation easements, showcased a vibrant tapestry of native wildflowers – like this cardinal flower!*



### Green Hills Farm Conservation Easement, Lycoming County

*The changing landscapes and different habitats on the Green Hills conservation easement provide a home for many types of wildlife and native species, including this fritillary butterfly resting on common milkweed.*



### Dickey Farm Conservation Easement, Clinton County

*Established in 1999, the Dickey Farm conservation easement remains productive farmland while also conserving land around two creeks that support our local watersheds.*

## Helping Conservation Easement Landowners Develop Forest Management Plans

Managing a forest with the intent of keeping the forest functioning takes time, a lot of forward thinking, and many walks in the woods. For nine landowners of properties under conservation easement with NPC they're doing those three things and more.

NPC received a grant from WeConservePA to offset the costs of developing forest management plans for land under conservation easement in the Chesapeake Bay watershed. The plans are a tool to help landowners as they make management decisions for their woods. The plans will be wrapped up by the end of the year. Some landowners are already implementing their forest management plans. Thank you to our members for allowing NPC to have staff ready and available to work with landowners and manage grants.



*The landowners of the Laning Creek conservation easement walk the property with the Forester, helping to develop a forest management plan.*

## That's a Wrap on the 2024 Stream Season!

The Northcentral Stream Partnership had a busy season! It kicked off in March and wrapped up in September. Over those months the team worked with landowners across the region.

One stream worked on this year was Warrior Run in Northumberland County. It's a small stream that meanders through farm fields, woods, and backyards. If you've ever been to the Warrior Run School District's cross-county course or the AYSO soccer fields next door, you've been along Warrior Run.

In August, the Northcentral Stream Partnership built off past work you've supported and completed phase 1 of this project with the Warrior Run School District. The stream couldn't access the floodplain and was eroding more and more of the streambank with each passing high water event. In some places, there was only a couple feet from the edge of the streambank and the cross-country course.

Using Growing Greener Grant funding, NPC worked with our partners at the Pennsylvania Fish and Boat Commission, Northumberland County Conservation District, and Pennsylvania Department of Environmental Protection to install log and rock structures along a stretch of the stream. We'll be back in 2025 to continue working on the segment of stream that the School District owns and decrease the sediment going into Warrior Run.



*Your support of NPC is helping to restore the health of Warrior Run in Northumberland County.*

## Stabilizing Blossburg's Island Park Riverbank

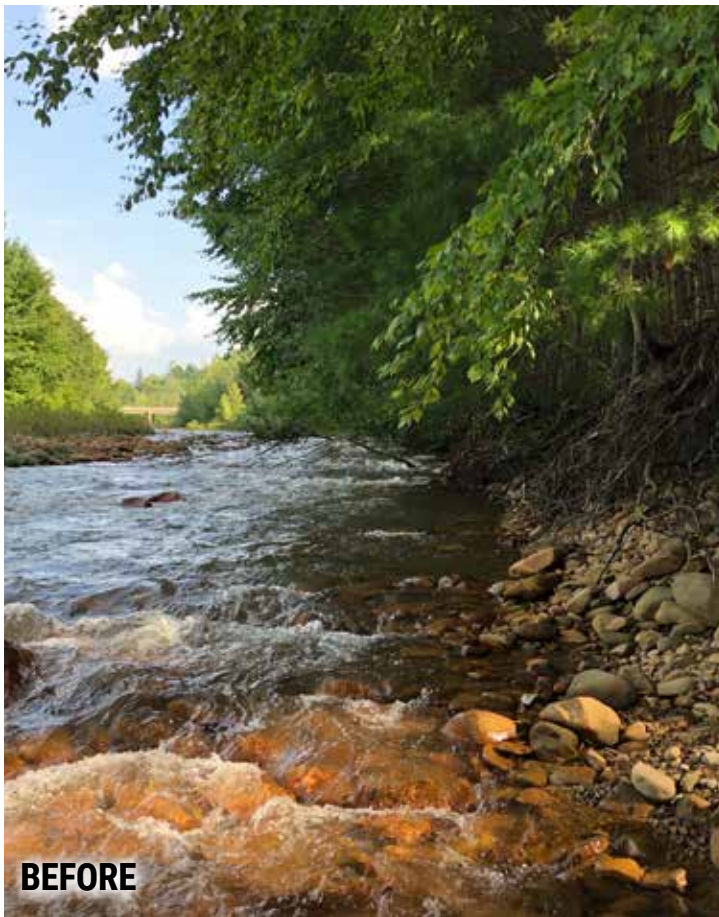
NPC's members are not only helping to restore nearly 21 miles of the Tioga River by addressing the abandoned mine drainage (AMD) in Coal Creek. You are also thinking ahead to when the Tioga River has trout and other coldwater fish swimming through downtown Blossburg.

Thanks to your support, NPC was able to collaborate with the Blossburg Borough and multiple other organizations to stabilize approximately 300 feet along the Tioga River in Blossburg's Island Park.

The riverbank in this section had been eroding, or washing away, for some time. Stabilizing the bank with log and rock structures helps reduce erosion, create fish habitat, and better recreational access for the community. In 3 to 5 years, when the AMD treatment system is running and the Tioga River is clean, the stable riverbank and fish habitat you created will allow anglers the opportunity to fish in a public park with parking and restrooms.

"We've been working a long time on getting the Tioga River cleaned up, but it's not just about clean water. It's also about having opportunities for the communities along the River to have access and enjoy fishing and swimming once the River is cleaned up. This riverbank stabilization project is a great example of how a lot of partners can do a small part that makes a big project possible." - *Charlie Andrews, President of the Tioga County Concerned Citizens Committee (T4C)*

To learn more about this exciting project and the positive impact you're having on the Tioga River and Blossburg community, read the full article online: <https://npcweb.org/npc-members-help-stabilize-riverbank-and-create-fish-habitat-along-tioga-river-in-blossburgs-island-park/>.



*Sometimes the structures are like magic. Here you can see tree roots sticking out from the riverbank in the before. Abracadabra! In the after, the tree roots have disappeared. The log and rock structures have covered the tree roots and will allow the riverbank to reestablish.*



*Seeding along Spring Creek stabilizes the soil, while the mulch retains moisture, reduces runoff, and protects the young plants as they establish their roots.*

## Supporting Spring Creek

The success you've created for the northcentral stream partnership allows NPC to help coordinate other water quality improvement projects.

This August we completed the first of three projects on Spring Creek in Centre County. In partnership with the Pennsylvania Fish and Boat Commission and Western Pennsylvania Conservancy, the streambank in Spring Township's Spring Creek Nature Parks was stabilized. This will not only prevent additional sediment from entering Spring Creek, but also improves access for anglers and splashers.

Funding for this project, and two more - one in 2025 and another in 2026 - is provided through Susquehanna River Basin Commission's Consumptive Use grant program.

The next time you're near Bellefonte, head to the park and take a walk along the stream to see what you helped make possible!

## Is NPC in Your Will?

Remembering NPC in your will can be a way to leave a legacy to future generations or honor loved ones.

If you have already included us in your will, please be sure to let us know so we can thank you now!"

NPC • PO Box 2083 • Williamsport, PA 17703  
570-323-6222  
[www.npcweb.org](http://www.npcweb.org)

## 2023 Financial Report

The 2023 audit wrapped up in October 2024. The information provided is based on audited financial statements prepared by McKonly & Asbury. Full copies of the audited financial statements, IRS Form 990, and Bureau of Charitable Organizations filings are available by contacting the Northcentral Pennsylvania Conservancy Office.

### STATEMENT OF FINANCIAL POSITION

#### Assets

Cash & investments	\$2,828,639.00
Other assets	\$36,841.00

**Total assets \$2,865,480.00**

**Liabilities \$119,731.00**

Net assets	\$2,745,749.00
------------	----------------

**Total liabilities and net assets \$2,865,480.00**

#### Revenue

Grants 35%	\$ 455,829.00	35%
Contributions 41%	\$ 527,965.00	41%
Memberships 7%	\$ 88,191.00	7%
Net Investment Return -15%	\$ 190,557.00	15%
Project Income &		
Reimbursements 0%	\$ 4,110.00	0%
Fundraising Income 1%	\$ 18,163.00	1%
Miscellaneous Income 0%	\$ 201.00	0%
Gain on Sale of Land	\$ 988.00	0%
	\$ 1,286,004.00	

#### Expense

Conservation Program		
Services 86%	\$ 738,249.00	86%
Management & General 10%	\$ 85,233.00	10%
Fundraising 4%	\$ 30,883.00	4%
	\$ 854,365.00	



NPC Board Member, Julie, greets visitors at Wellsboro's 6 Hometown Science Festival.

# DONATIONS & CONTRIBUTIONS • July 1 to September 30, 2024

MEMBERSHIPS			GENERAL CONTRIBUTIONS
Anonymous Nancy G. W. Baker Andrew Bamford Rob Barbour Steve & Beth Bason Mike & Donna Bastian Ron & Sondra Beach Dale & Shirley Bittenbender Lois Block Mary Baumunk Blondy Barry & Nancy Boyer Brian Brooking Brian Brown Carson V. Brown II, DDS Jeff & Jenny Campbell Patrick & Maureen Carey Reneé Carey Richard & Grace Carey Raymond Chernikovich William & Ruth Correll Edward Crow Jane Darrow Jack & Michele Davidson John Deckard Dwight Lewis Lumber Co. Inc. Joseph & Ginny English George J. Gard Daniel Glunk & Margrit Shoemaker Ralph Harnishfeger William & Kelly Hastings Tim & Anne Holladay Kathy Hollick	Harvey Katz Matt & JoAnn Kitko Charles D. Lamade Marc & Diane Lewis Steve & Deb Martin Richard Matukonis & Anne Rice Bob & Donna McCoy Deen McKillips John & Cathy Miller Randall & Maxine Mills Max Mitchell Steve & Kathleen Mondell Dorian Myers Pine Creek Headwaters Protection Group RDF Tax Services, LLC James & Cheryl Redmond Scott Reed Phyllis Wise Reynolds Dave Rockey Alan & Cheryl Sands Ryan & Sarah Satalin Carl W. Schlappi Charles & Helen Schwarz Sam Shaheen Leo & Jennifer Shedden Matt & Kim Smargiasso Margaret Smith Barbara Sonies Dan & Melanie Taormina Rick & Cathy Torsell David Tregea Twin Valley Hunting Club	William & Kimberly Van Campen Chalmer Van Horn Wayne Twp. Landfill CCSWA Wheeland Lumber Co. Inc. J. Michael & Ashley Wiley Jane B. Williams Dan & Margery Wurster  <b>ISLAND PARK PARTNERS AND DONORS</b> Blossburg Borough Tioga County Conservation District Trout Unlimited Tioga County Concerned Citizens Committee American Legion Post #167 Jim & Lynne Hatch Hillside Rod & Gun Club Stephanie Pranses John & Kristine Reilly Tioga County Woodland Owners Association Trout Unlimited Tiadaghton Chapter #688 Williamson Road Foundation Western Pennsylvania Conservancy BHE GT&S  <b>2024 A NIGHT FOR NATURE CONTRIBUTION</b> Turkey Hill Inn, Inc.  <b>LAND CONSERVATION</b> Louis & Wanda E. Irion	Reneé Carey Dr. Robert & Loretta Coltrane George & Shirley Durrwachter Stephen & Martha Huddy Candace S. Nevel & Ellice Tomlinson Susan Post William & Kimberly Van Campen  <b>IN MEMORY OF</b> <i>In memory of</i> <b>Robert Bernhardt</b> Helen Bernhardt  <i>In memory of</i> <b>Donald L. Brobst</b> Elizabeth S. Brobst  <i>In memory of</i> <b>Mary Cosgrove</b> Lois Block  <i>In memory of</i> <b>Joseph H. Cramer</b> George & Shirley Durrwachter  <b>IN HONOR OF</b> <i>In honor of</i> <b>the NPC Staff</b> Albert & Judith Styrcula  <i>In honor of</i> <b>Phyllis Reynolds</b> Daniel R & Martha Gandy



For just \$1 a day, you can become a member of NPC's inaugural Bedrock Society. Scan to learn more!





## Northcentral Pennsylvania Conservancy

PO Box 2083  
Williamsport, PA 17703  
570-323-6222  
[www.npcweb.org](http://www.npcweb.org)

NON-PROFIT ORG.  
U.S. POSTAGE  
**PAID**  
WILLIAMSPORT, PA  
PERMIT NO. 33

Return Service Requested

### UPCOMING EVENTS

Additional details will be available at [npcweb.org](http://npcweb.org), the NPC facebook page, and through email updates.

Mark Your Calendar!

- **January 1** – 1st Day Hike, Location TBD
- **January 20** – Winter Seed Sowing Workshop, NPC Office
- **March 15** – Master Gardener Symposium, Williamsport
- **March 21** – Celebrity Waiter Night at the Peter Herdic House, Williamsport
- **April** – Bicycle Tune-up Workshop
- **May** – Intro to Fly Fishing Workshop
- **June** – NPC's Annual Membership Meeting
- **June** – Paddle Happy 2025
- **June** – Family Fishing Day
- **July** – Forest Bathing Workshop



*In July, NPC partnered with Deep Green Journey and Friends of Worlds End State Park to host a Forest Bathing walk. The woods and creek provided the perfect backdrop for a beautiful day of reflection and relaxation.*